

LTBR Antibody (N-term)
Affinity Purified Rabbit Polyclonal Antibody (Pab)
Catalog # AP16019A**Specification**

LTBR Antibody (N-term) - Product Information

Application	WB,E
Primary Accession	P36941
Other Accession	NP_002333.1
Reactivity	Mouse
Host	Rabbit
Clonality	Polyclonal
Isotype	Rabbit IgG
Calculated MW	46709
Antigen Region	29-57

LTBR Antibody (N-term) - Additional Information**Gene ID** 4055**Other Names**

Tumor necrosis factor receptor superfamily member 3, Lymphotoxin-beta receptor, Tumor necrosis factor C receptor, Tumor necrosis factor receptor 2-related protein, Tumor necrosis factor receptor type III, TNF-RIII, TNFR-III, LTBR, D12S370, TNFCR, TNFR3, TNFRSF3

Target/Specificity

This LTBR antibody is generated from rabbits immunized with a KLH conjugated synthetic peptide between 29-57 amino acids from the N-terminal region of human LTBR.

Dilution

WB~~1:1000

E~~Use at an assay dependent concentration.

Format

Purified polyclonal antibody supplied in PBS with 0.09% (W/V) sodium azide. This antibody is purified through a protein A column, followed by peptide affinity purification.

Storage

Maintain refrigerated at 2-8°C for up to 2 weeks. For long term storage store at -20°C in small aliquots to prevent freeze-thaw cycles.

Precautions

LTBR Antibody (N-term) is for research use only and not for use in diagnostic or therapeutic procedures.

LTBR Antibody (N-term) - Protein Information**Name** LTBR

Synonyms D12S370, TNFCR, TNFR3, TNFRSF3

Function Receptor for the heterotrimeric lymphotoxin containing LTA and LTB, and for TNFS14/LIGHT (PubMed:[24248355](#)). Activates NF-kappa-B signaling pathway upon stimulation with lymphotoxin (LTA(1)-LTB(2)) (PubMed:[24248355](#)). Promotes apoptosis via TRAF3 and TRAF5. May play a role in the development of lymphoid organs.

Cellular Location

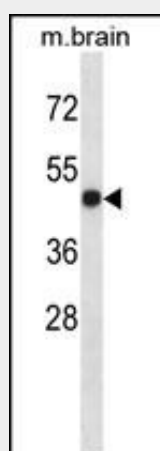
Membrane; Single-pass type I membrane protein.

LTBR Antibody (N-term) - Protocols

Provided below are standard protocols that you may find useful for product applications.

- [Western Blot](#)
- [Blocking Peptides](#)
- [Dot Blot](#)
- [Immunohistochemistry](#)
- [Immunofluorescence](#)
- [Immunoprecipitation](#)
- [Flow Cytometry](#)
- [Cell Culture](#)

LTBR Antibody (N-term) - Images



LTBR Antibody (N-term) (Cat. #AP16019a) western blot analysis in mouse brain tissue lysates (35ug/lane). This demonstrates the LTBR antibody detected the LTBR protein (arrow).

LTBR Antibody (N-term) - Background

The protein encoded by this gene is a member of the tumor necrosis factor (TNF) family of receptors. It is expressed on the surface of most cell types, including cells of epithelial and myeloid lineages, but not on T and B lymphocytes. The protein specifically binds the lymphotoxin membrane form (a complex of lymphotoxin-alpha and lymphotoxin-beta). The encoded protein and its ligand play a role in the development and organization of lymphoid tissue and transformed cells. Activation of the encoded protein can trigger apoptosis.

LTBR Antibody (N-term) - References

Cheung, T.C., et al. J. Immunol. 185(3):1949-1958(2010)
Han, S., et al. Hum. Immunol. 71(7):727-730(2010)
Sanjo, H., et al. J. Biol. Chem. 285(22):17148-17155(2010)
Rajaraman, P., et al. Cancer Epidemiol. Biomarkers Prev. 19(5):1356-1361(2010)
Davila, S., et al. Genes Immun. 11(3):232-238(2010)